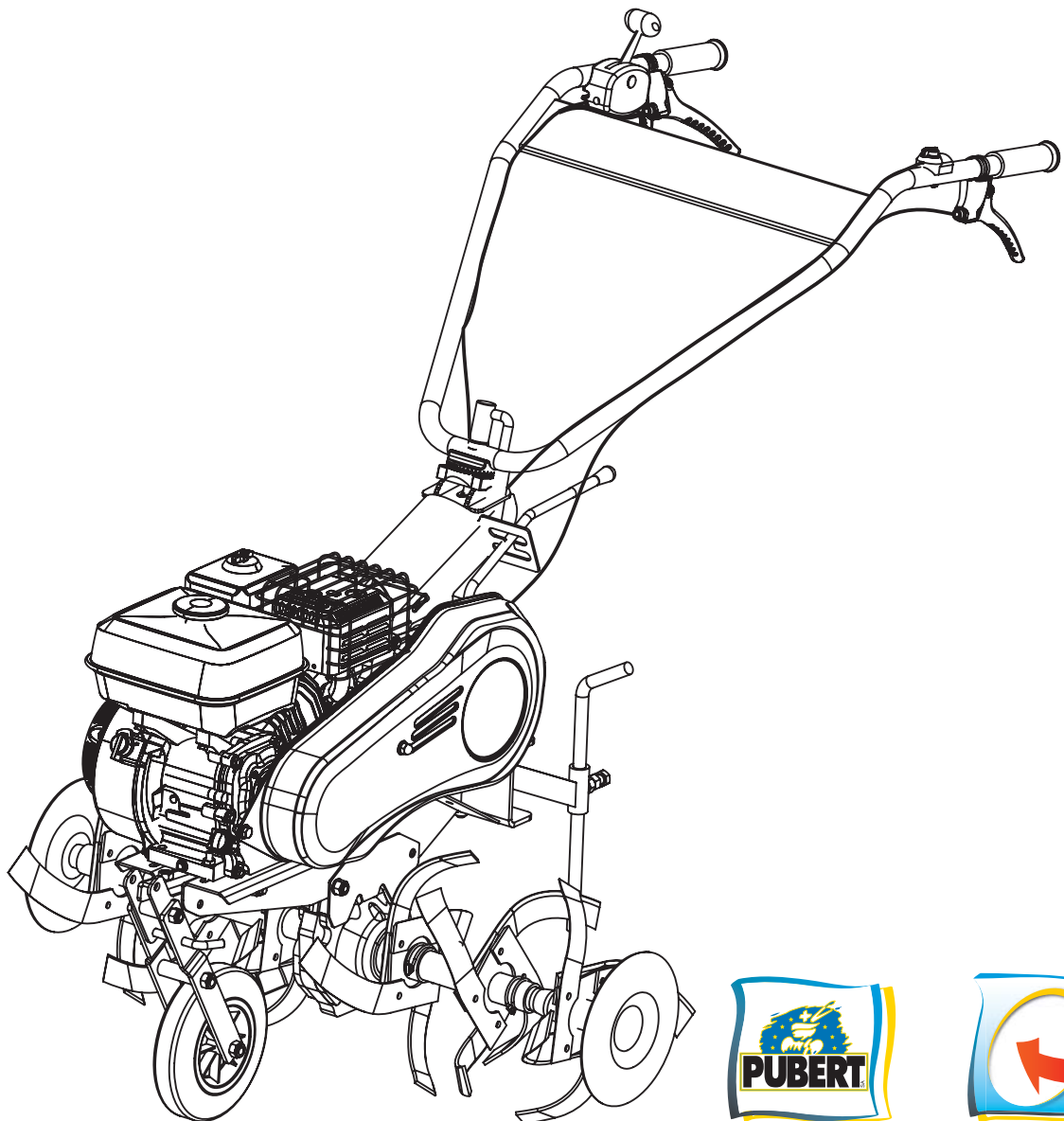
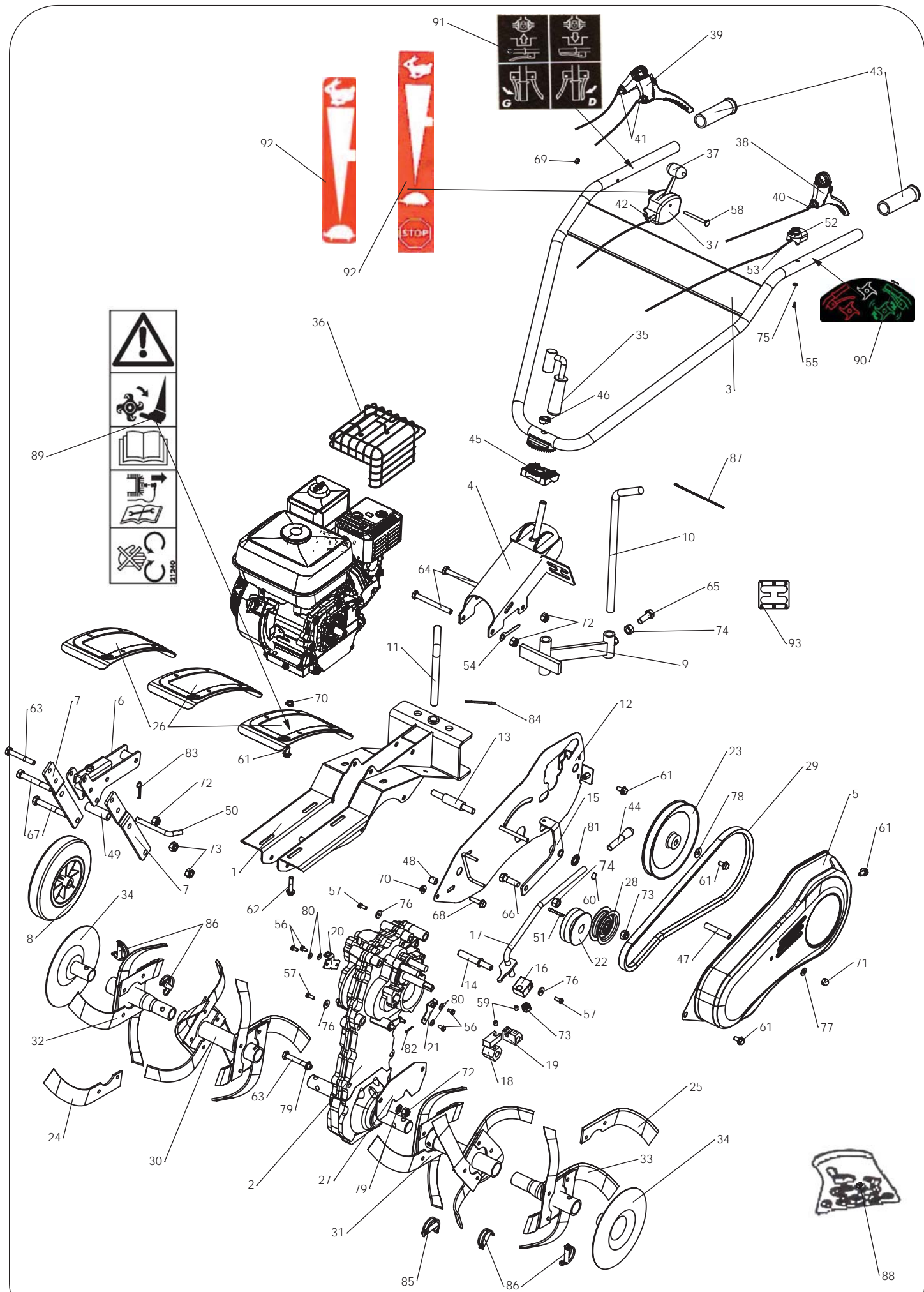


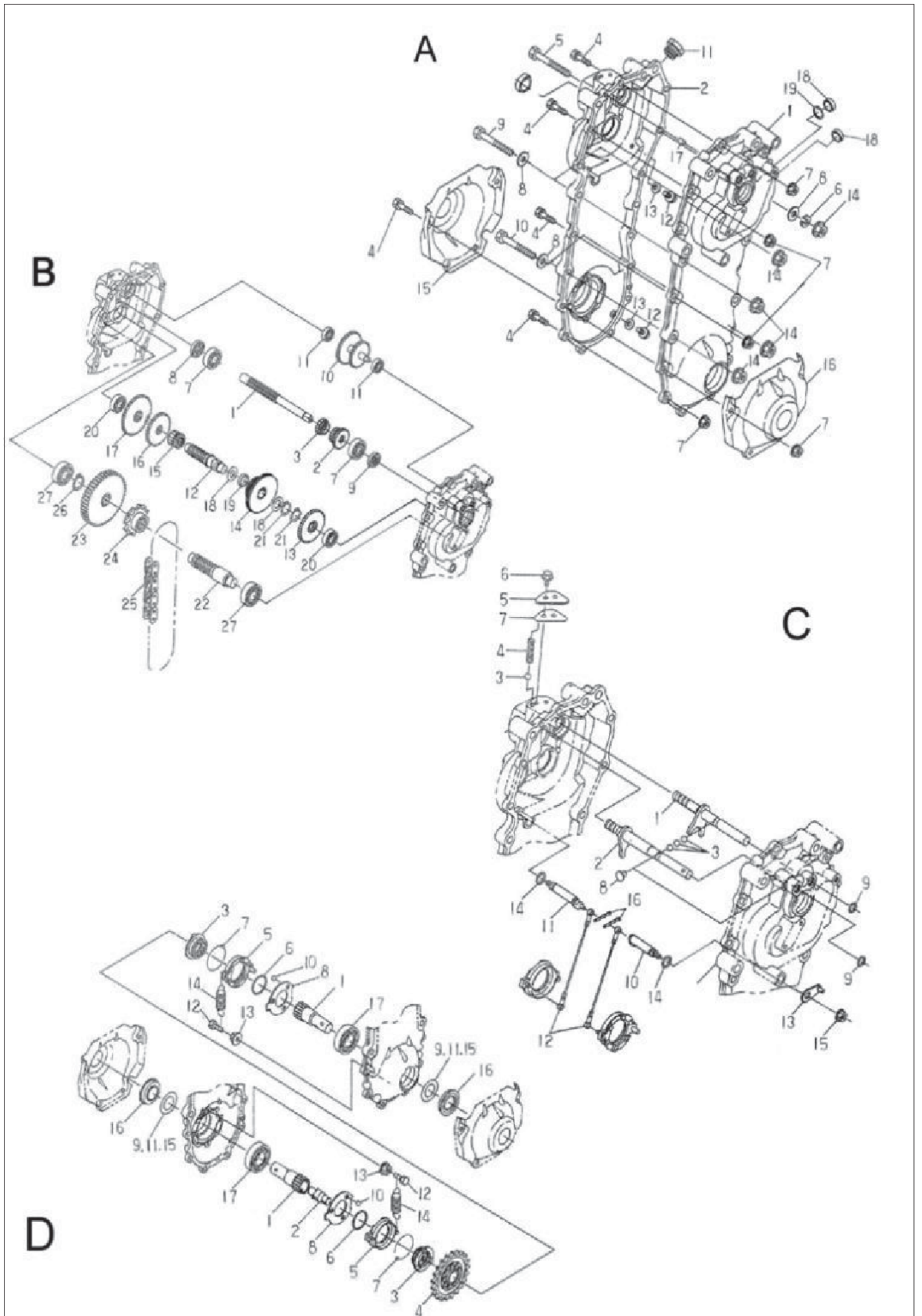
Pièces de rechange Spare parts list

QUATRO SENIOR



*MOTOBINEUSE TRANSFORMABLE
CONVERTIBLE ROTARY CULTIVATOR*

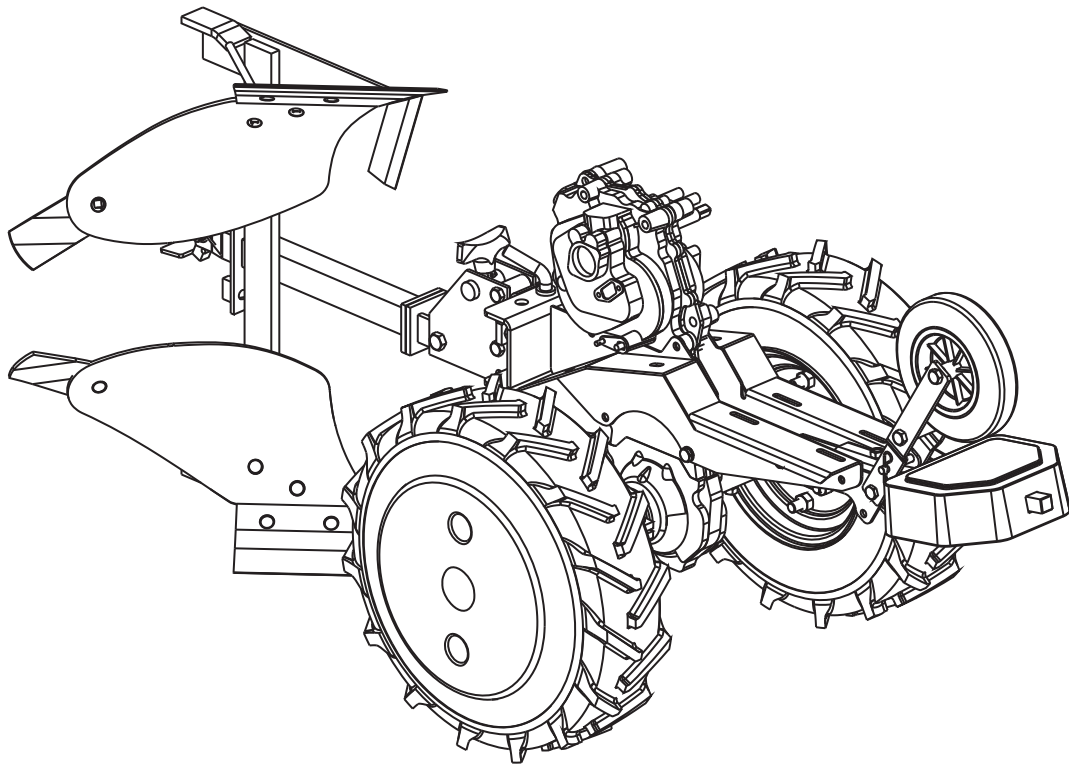




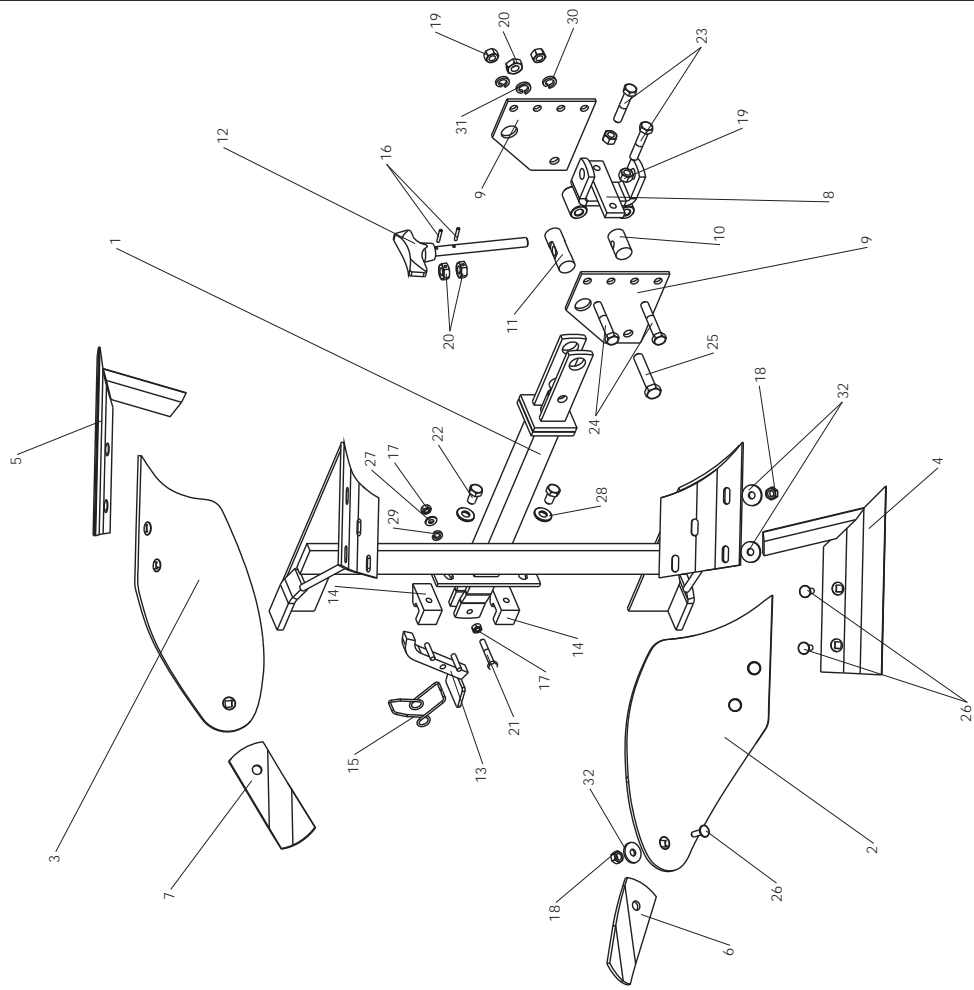
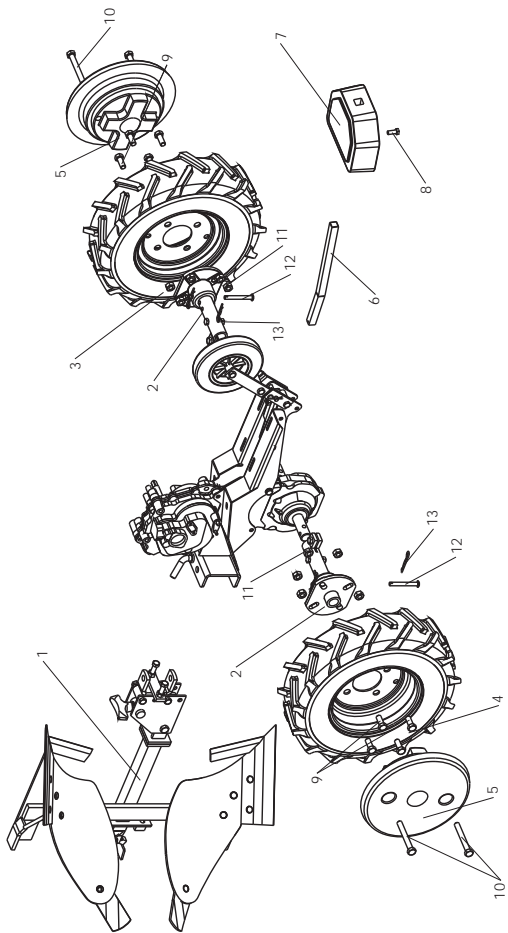
Rep N°	Ref.	Désignation	Description	Qté
1A	0002010200	CARTER G	CASE L	1
2A	0002010201	CARTER D	CASE R	1
4A	0300010807	VIS H M8 Lg. 30mm	SCREW H M8 LG. 30mm	11
5A	0300011013	VIS H M10 Lg. 80mm	SCREW H M10 LG. 80mm	1
6A	0300451001	RONDELLE GROWER 10 Z	WASHER,spring 10Z	1
7A	0300260801	ECROU H M8 z emb cr	NUT,flange H M8 z	11
8A	0300401002	RONDELLE PLATE M 10X22X2 Z	WASHER M 10X22X2 Z	5
9A	0300011019	VIS H M10 Lg. 80mm	SCREW H M10 LG. 80mm	2
10A	0300011020	VIS H M10 Lg. 85mm	SCREW H M10 LG. 85mm	2
11A	0002010202	BOUCHON D'HUILE	PLUG,oil	1
12A	0002010203	BOUCHON DE VIDANGE	PLUG	2
13A	0002010204	RONDELLE D'ETANCHEÏTE	WASHER,seal	2
14A	0300261001	ECROU H M10 z emb cr	NUT,flange H M10 z	5
15A	0002010205	TOLE DE PROTECTION D	COVER R	1
16A	0002010206	TOLE DE PROTECTION G	COVER L	1
17A	0002010207	GOUPILLE Ø8x12	PIN Ø8x12	2
18A	0002010208	BOUCHON D'ETANCHEÏTE	CAP,seal	2
19A	0002010209	CIRCLIPS Ø14	C-RING Ø14	1
1B	0002010210	ARBRE 1	SHAFT 1	1
2B	0002010211	ENGRENAGE (23 DENTS)	GEAR 23	1
3B	0002010212	ENGRENAGE (18 DENTS)	GEAR 18	1
7B	0002010213	ROULEMENT TMB 6303	BEARING,ball TMB 6303	2
8B	0002010214	BOUCHON D'ETANCHEÏTE	CAP,seal	1
9B	0002010215	JOINT D'ETANCHEÏTE	SEAL,oil	1
10B	0002010216	ARBRE 2	SHAFT 2	1
11B	0002010217	ROULEMENT TMB 6201	BEARING,ball TMB 6201	2
12B	0002010218	ARBRE 3	SHAFT 3	1
13B	0002010219	ENGRENAGE (41 DENTS)	GEAR 41	1
14B	0002010220	ENGRENAGE DOUBLE (27 et 41 DENTS)	GEAR 27-41	1
15B	0002010221	ENGRENAGE (16 DENTS)	GEAR 16	1
16B	0002010222	ENGRENAGE (43DENTS)	GEAR 43	1
17B	0002010223	ENGRENAGE (48 DENTS)	GEAR 48	1
18B	0002010224	RONDELLE DE CALAGE	LINER A	2
19B	0002010225	BAGUE	BUSHING	1
20B	0002010226	ROULEMENT TMB 6203	BEARING,ball TMB 6203	2
21B	0002010227	CIRCLIPS Ø22	C-RING Ø22	2
22B	0002010228	ARBRE 4	SHAFT 4	1
23B	0002010229	ENGRENAGE (47 DENTS)	GEAR 47	1
24B	0002010230	PIGNON A CHAÏNE (10 DENTS)	SPROCKET 10	1
25B	0002010231	CHAÏNE	CHAIN	1
26B	0002010232	CIRCLIPSØ25	C-RING Ø25	1
27B	0002010233	ROULEMENT	BEARING,ball	2
1C	0002010234	ARBRE INT. G	1-3 SHIFT SHAFT	1
2C	0002010235	ARBRE INT. D	R-2 SHIFT SHAFT	1
3C	0002010236	BILLE (1/4")	BALL (1/4")	5
4C	0002010237	RESSORT	SPRING	2
5C	0002010238	PLAT DE FIXATION	PLATE	1
6C	0300010613	VIS H M8 LG.12 z emb cr	SCREW H M8 LG. 12mm, flange	2
7C	0002010239	GARNITURE D'ETANCHEÏTE	PACKING	1
8C	0002010240	BOUCHON	PLUG	1
9C	0002010241	JOINT TORIQUE Ø14	O-RING Ø14	2
10C	0002010242	ARBRE G	LINK SHAFT L	1
11C	0002010243	ARBRE D	LINK SHAFT R	1
12C	0002010244	CABLE	WIRE	2
13C	0002010245	LEVIER DECRABOTTAGE	SHIFT LEVER	2
14C	0002010246	JOINT TORIQUE Ø10	O-RING Ø10	2
15C	0300260801	ECROU H M8 z emb cr	NUT,flange H M8 z	2
16C	0002010247	GOUPILLE Ø1,6x12	PIN,split Ø1,6x12	2
1D	0002010248	ARBRE SORTIE	FINAL SHAFT	2
2D	0002010249	PION DE CENTRAGE	PIN	1
3D	0002010250	CRABOT	CLUTCH	2
4D	0002010251	PIGNON A CHAÏNE (21 DENTS)	SPROCKET 21	1
5D	0002010252	BAGUE MAINTIENT CRABOT	HOLDER	2
6D	0002010253	SEGMENT D'ARRET	RING,SNAP	2
7D	0002010254	BILLE (1/4")	BALL (1/4")	50
8D	0002010255	BAGUE DE RETENUE	RETAINER	2
9D	0002010256	RONDELLE DE CALAGE (t=0,2)	LINER (t=0,2)	AR*
10D	0002010257	BILLE (3/8")	BALL (3/8")	6
11D	0002010258	RONDELLE DE CALAGE (t=0,4)	LINER (t=0,4)	AR*
12D	0300010603	VIS H M6 Lg. 30mm	SCREW H M6 LG. 30mm	4
13D	0300260601	ECROU H M6 z emb cr	NUT,flange H M6 z	4
14D	0002010259	RESSORT	SPRING	4
15D	0002010260	RONDELLE DE CALAGE (t=0,15)	LINER (t=0,15)	AR*
16D	0002010261	JOINT D'ETANCHEÏTE	SEAL,oil	2
17D	0002010262	ROULEMENT 6206	BEARING,ball 6206	2

Pièces de rechange Spare parts list

QUATRO SENIOR



KIT LABOUR PLOUGHING TILLING KIT



Rep N°	Ref.	Designation	Description	Ote
1	0320040003	Brabant 1/2 tour 6"	Reversible brabant 1/2 tour 6"	1
2	0302030064	Moyeux fixe	Fixed hubs	2
3	0309000007	Roue 5.00x10 gauche (pneu 4PR)	Left wheel 5.00x10 (tire 4PR)	1
4	0309000008	Roue 5.00x10 droite (pneu 4PR)	Right wheel 5.00x10 (tire 4PR)	1
5	0303000003	Masse de roue 500x10 30Kg	500x10 Wheel weight wheel 30Kg	2
6	3502020325	Support contre-poids	Balance weight support	1
7	0303000002	Contre poids avant	Front balance weight	1
8	0300011008	Vis H M10x25 z	Screw H M10x25 z	1
9	0300011402	Vis HM14x35 z	Screw HM14x35 z	8
10	0300011404	Vis HM14x110 z	Screw HM14x110 z	4
11	0300201401	Ecrou HU M14z	Nut HU M14z	12
12	0002080001	Goupille Ø10x80 fixation moyeu 3/4 et fixe	Pin Ø10x80	2
13	0301030002	Goupille Beta 3 Z	Clip pin beta 3 Z	2

Rep N°	Ref.	Designation	Description	Qte
1	0002070008	Corps de charrue	Plough's body	1
2	0002070014	Versoir droit	Right curved blade	1
3	0002070015	Versoir gauche	Left curved blade	1
4	0002070002	Soc droit	Right blade	1
5	0002070003	Soc gauche	Left blade	1
6	0002070004	Couche lêche droit	Right Aileron	1
7	0002070005	Couche lêche gauche	Left Aileron	1
8	0002070009	Attelage	Connecting part	1
9	0002070010	Piece d'attelage	Connecting part piece	2
10	0002070011	Entretoise inférieure	Bottom spacer	1
11	0002070012	Entretoise supérieure	Top Spacer	1
12	0002070007	Levier de réglage	Shifting lever	1
13	0002070006	Pédale de verrouillage	Locking footswitch	1
14	0002070013	piece de verrouillage	locking piece	2
15	0002070001	Ressort verrouillage	Locking spring	1
16	0301020002	Goupille 4x24 HBK	Cotter-pin 4x24 HBK	2
17	0300200802	Ecrou HM8 z	Nut HM8 z	2
18	0002070018	Ecrou HM 10z	Nut HM 10z	10
19	0300201202	Ecrou HM 12z	Nut HM 12z	4
20	0002070020	Ecrou bas H M14z	Bottom nut H M14z	3
21	0300010833	Vis HM 8x50 Z	Screw HM 8x50 Z	1
22	0002070016	Vis HM12x20 Z	Screw HM 12x20 Z	2
23	0300011207	Vis HM12x60z	Screw HM12x60z	2
24	0300011209	Vis HM12x70z	Screw HM 12x70z	2
25	0002070021	Vis HM14x70 z	Screw HM14x70 z	1
26	0002070017	Vis TF collet carré 9x25 D608	Screw TF collet carré 9x25 D608	10
27	0300400802	Rondelle M8x18x1.5 Z	Washer M8x18x1.5 Z	1
28	0300401201	Rondelle M 12x27x2.5 Z	Washer M 12x27x2.5 Z	2
29	0002070025	Rondelle Grower M8	Grower washer M8	1
30	0300451201	Rondelle Grower M12	Grower washer M12	2
31	0002070022	Rondelle Grower M14	Grower washer M14	1
32	0002070019	Rondelle Ø31x10.5x3	Washer Ø31x10.5x3	10